

**SFC**



**FREQUENCY SPEED CONTROLLER**

**MANUFACTURING FEATURES**

- Specially designed for speed frequency control in ventilation applications.
- Ultra compact, simple operation and wide range of functions.

\*Dial panel incorporated. Optional EMC filter.

Certifications: CE/UL/CSA/EN/GOST/CCC.

Protection index IP20.

The selection of SFC frequency drive speed controller must be made based on the maximum intensity absorbed by the fan to be regulated. The powers (kW) and the intensity for constant load refer to the normal duty (150% overload for 60 seconds). The intensity for quadratic load admits an overload of 110% during 60s.

SFC 230: Entrance 230V I, exit 230V III

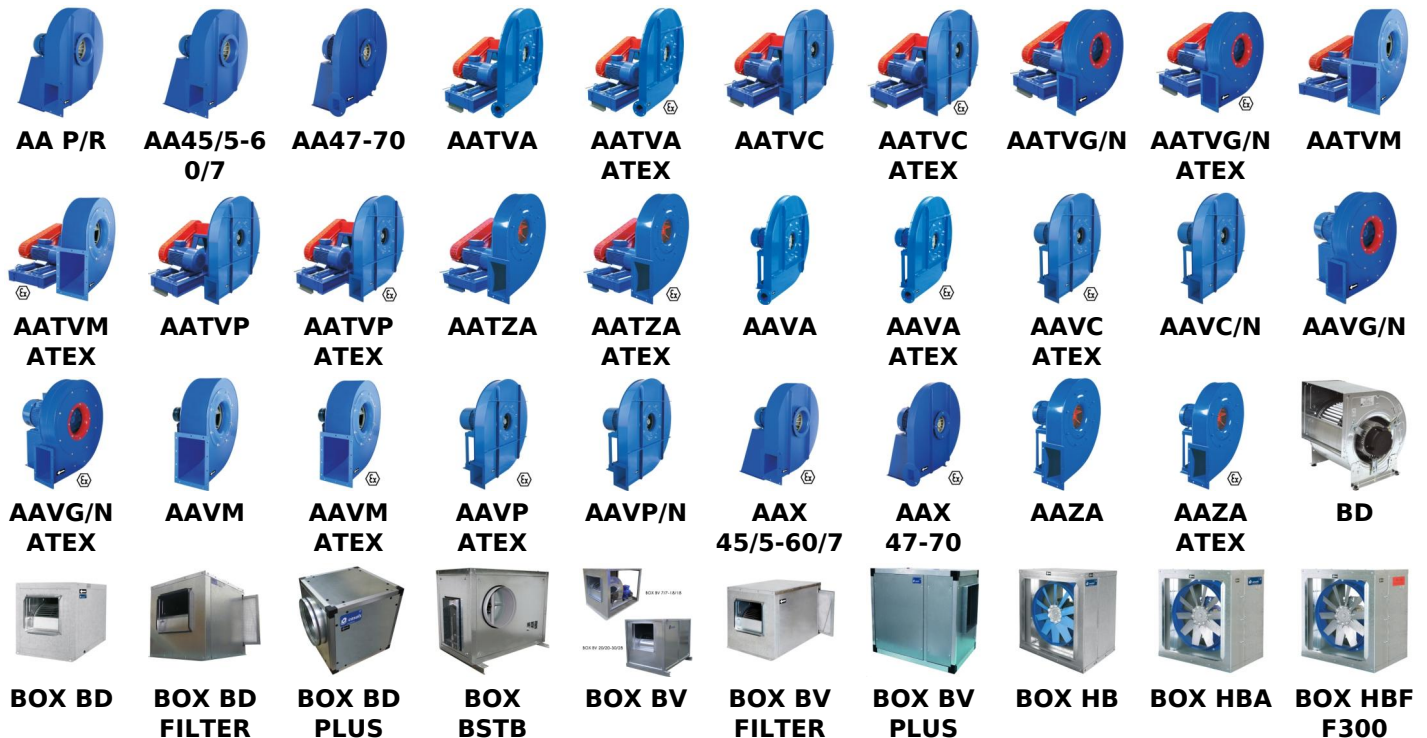
SFC 400: Entrance 400V III, exit 400V III

EMC filter incorporated for models from 47A (included)

\*Lineal load rated current

\*\*Quadratic load rated current

**Fans**





**BOX HBF F400**



**BOX HBFX (F300+A TEX)**



**BOX HBFX (F400+A TEX)**



**BOX HBX (ATEX)**



**BOX RL**



**BOX RLF F400**



**BOX RLFX (F400+A TEX)**



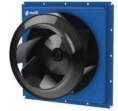
**BOX RLQ PLUS**



**BST**



**BVFC F400**



**CIKSTOR M**



**CLIBOS**



**CLIBOS-T R**



**COURSAL IS E**



**CTH3 ATEX**



**CTH3 F400**



**CTH3-A ATEX**



**CTH3-A F400**



**CTH4**



**DHUMAT**



**DHUMAT F400**



**HB**



**HBA**



**HBF F300**



**HBF F400**



**HBFX (F300+A TEX)**



**HBFX (F400+A TEX)**



**HBX (ATEX)**



**HC**



**HCA**



**HCF F300**



**HCF F400**



**HCFX (F300+A TEX)**



**HCFX (F400+A TEX)**



**HCX (ATEX)**



**HH-2**



**HJBM PLUS**



**HJBMX**



**HM**



**HMA**



**HMF F300**



**HMF F400**



**HMFX (F300+A TEX)**



**HMFX (F400+A TEX)**



**HMR EVO**



**HMX (ATEX)**



**IGNÉO**



**JF F400**



**JFC CORE F400**



**JFC F400**



**KASTOR M**



**KENTALBOX PLUS**



**KENTALFAN**



**KENTALROOF**



**KENTALROOF-A**



**MA P/R**



**MA18-25**



**MA26-31**



**MAX**



**MB P/R**



**MB12/5-2 0/8**



**MB22/9-2 8/11**



**MB31/12-45/18**



**MBC**



**MBCA**



**MBCA ATEX**



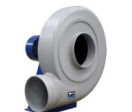
**MBGR**



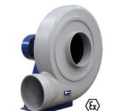
**MBGR ATEX**



**MBP**



**MBPC**



**MBPCX**



**MBPX**



**MBRM**



**MBRM ATEX**



**MBRU**



**MBRU ATEX**



**MBX**



**MBZM P/R**



**MBZM P/R ATEX**



**MDI**



**MTCA**



**MTZM  
P/R**



**SYBILO  
F400**

**MTCA  
ATEX**



**MTZM  
P/R ATEX**



**TWIN  
BOX BD**

**MTGR**



**NIMAX**



**TWIN  
BOX BD  
PLUS**

**MTGR  
ATEX**



**NIMAX  
ATEX**



**TWIN  
BOX BV**

**MTRL**



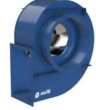
**NIMUS**

**MTRL  
ATEX**



**NIMUS  
ATEX**

**MTRM**



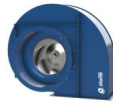
**PRESTUR**

**MTRM  
ATEX**



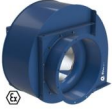
**PRESTUR  
ATEX**

**MTRU**



**PREXTUR**

**MTRU  
ATEX**

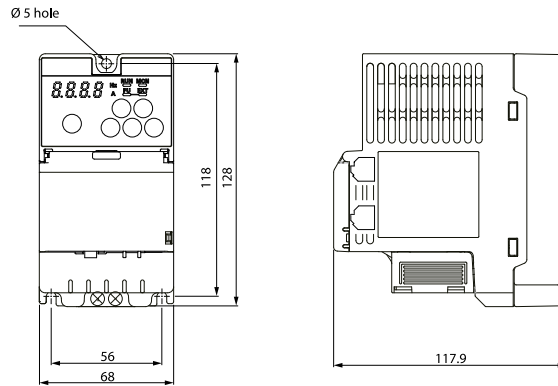


**PREXTUR  
ATEX**

## Technical data

| Code         | Model               | Max.I.<br>A                | Weight<br>kg | Connect.<br>diagram |
|--------------|---------------------|----------------------------|--------------|---------------------|
|              | SFC (GENERIC)       |                            | -            | 1                   |
| SFC230I003   | SFC 230 I 2,5A *    | 2.5                        | 0,60         | 1                   |
| SFC230I004   | SFC 230 I 4,2A *    | 4.2                        | 0,60         | 1                   |
| SFC230I007   | SFC 230 I 7A *      | 7                          | 1,40         | 1                   |
| SFC230I0010  | SFC 230 I 10A *     | 10                         | 1,40         | 1                   |
| SFC400III1   | SFC 400 III 1,2A *  | 1.2                        | 0,60         | 1                   |
| SFC400III2   | SFC 400 III 2,2A *  | 2.<br>2000000000000<br>002 | 0,60         | 1                   |
| SFC400III4   | SFC 400 III 3,6A *  | 3.6                        | 0,90         | 1                   |
| SFC400III5   | SFC 400 III 5A *    | 5                          | 0,90         | 1                   |
| SFC400III8   | SFC 400 III 8A *    | 8                          | 1,40         | 1                   |
| SFC400III12  | SFC 400 III 12A *   | 12                         | 1,90         | 1                   |
| SFC400III16  | SFC 400 III 16A *   | 16                         | 1,90         | 1                   |
| SFC400III23  | SFC 400 III 23A *   | 23                         | 3,50         | 1                   |
| SFC400III30  | SFC 400 III 29,5A * | 29.5                       | 3,50         | 1                   |
| SFC400III41  | SFC 400 III 41A **  | 41                         | 4,90         | 1                   |
| SFC400III45  | SFC 400 III 45A **  | 45                         | 11           | 1                   |
| SFC400III60  | SFC 400 III 60A **  | 60                         | 11           | 1                   |
| SFC400III77  | SFC 400 III 77A **  | 77                         | 23           | 1                   |
| SFC400III93  | SFC 400 III 93A **  | 93                         | 41           | 1                   |
| SFC400III116 | SFC 400 III 116A ** | 116                        | 41           | 1                   |

## Dimensions



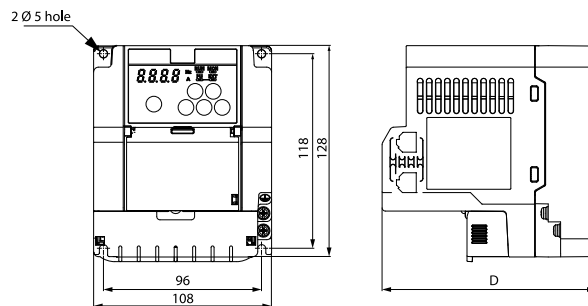
### Model

SFC 230 I 2,5A \*

SFC 230 I 4,2A \*

SFC 400 III 1,2A \*

SFC 400 III 2,2A \*



### Model

### D

SFC 230 I 7A \*

160

SFC 230 I 10A \*

160

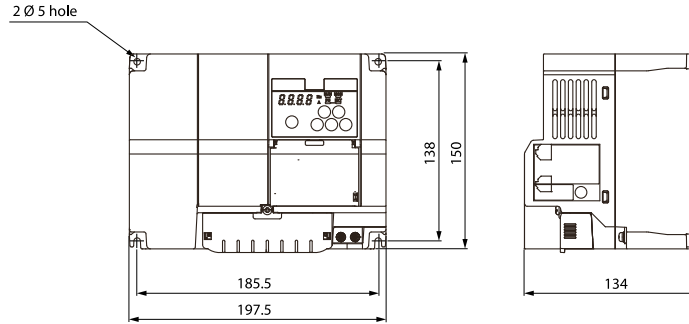
SFC 400 III 3,6A \*

130

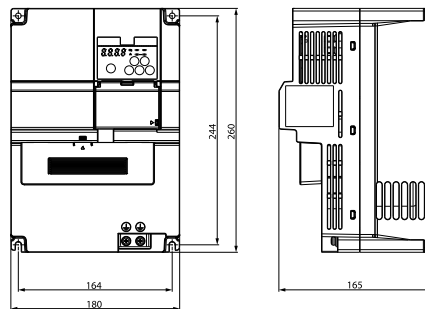
SFC 400 III 5A \*

130

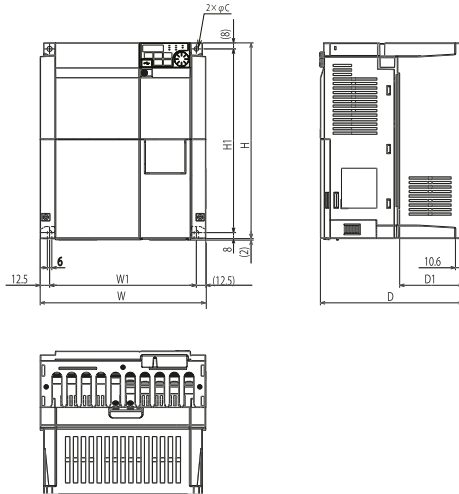
| Model            | D   |
|------------------|-----|
| SFC 400 III 8A * | 160 |



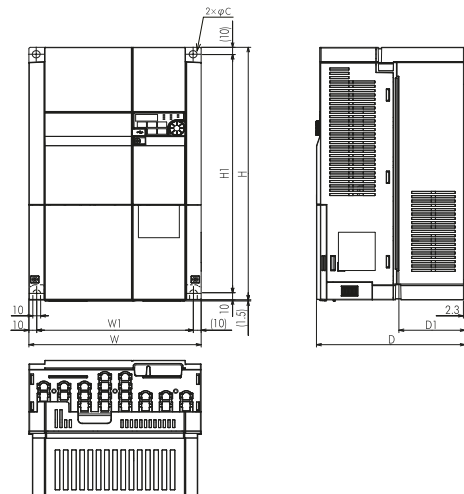
| Model             |
|-------------------|
| SFC 400 III 12A * |
| SFC 400 III 16A * |



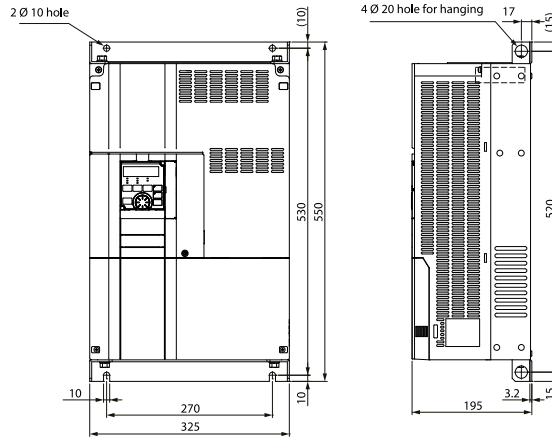
| Model               |
|---------------------|
| SFC 400 III 23A *   |
| SFC 400 III 29,5A * |



| Model              | C | D   | D1   | H   | H1  | W   | W1  |
|--------------------|---|-----|------|-----|-----|-----|-----|
| SFC 400 III 41A ** | 6 | 190 | 84.7 | 260 | 244 | 220 | 195 |

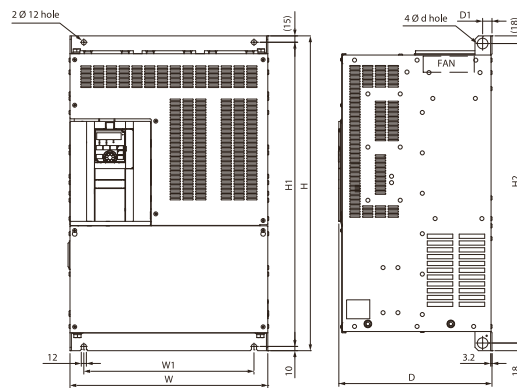


| Model              | C  | D   | D1   | H   | H1  | W   | W1  |
|--------------------|----|-----|------|-----|-----|-----|-----|
| SFC 400 III 45A ** | 10 | 190 | 84.7 | 350 | 330 | 220 | 200 |
| SFC 400 III 60A ** | 10 | 190 | 84.7 | 350 | 330 | 220 | 200 |



**Model**

SFC 400 III 77A \*\*



| Model               | D   | D1 | H   | H1  | H2  | W   | W1  | d  |
|---------------------|-----|----|-----|-----|-----|-----|-----|----|
| SFC 400 III 93A **  | 250 | 24 | 550 | 525 | 514 | 435 | 380 | 25 |
| SFC 400 III 116A ** | 250 | 24 | 550 | 525 | 514 | 435 | 380 | 25 |



# Wiring diagram

## Wiring diagram N° 1

